

A pair of hands is shown from the palms up, holding a world map. The map is spread across both hands, with the fingers and palms acting as the map's surface. The map shows continents in various colors (green, yellow, orange, red, purple) and oceans in blue. The word 'CANADA' is visible on the left hand's index finger, and 'WORLD' is visible on the left hand's palm. The background is a bright blue sky with white, fluffy clouds.

# *Our **Local** and **Global** Reach*

**Acts 1:8, p.758**











# Our Local and Global Reach



## **Local and Global Reach**

**“But you will receive power when the Holy Spirit comes on you; and you will be my witnesses in Jerusalem, and in all Judea and Samaria, and to the ends of the earth.” Acts 1:8**



# What is Great Commission Completion?



Every individual and group of people in the world should have an opportunity to accept or reject Jesus Christ as Lord and Savior.



# Local and Global Reach



- What remains to be done on the assigned task?  
Where are we going?
- What is the Path God would have each of us take to complete this expedition?

# Our World

- 195 countries
- 17,095 people groups
- 7,151 are un-reached groups
- 7,700,000,000 people (7.7 billion)



# Our World

7.7 billion  
people



# Reached

4.6 Billion



# Unreached

3.1 Billion



Do they have an established church in their culture capable of evangelizing the people?

YES

NO



# How do we reach them?

How do we reach:

- 3.1 billion people?
- 7151 people groups?
- By using the **Acts 1:8** model:

**Jerusalem**

E0 – Driving

**Judea**

E1 – The Hike

**Samaria**

E2 – The Approach

**All peoples**

E3 – The Climb

# How do we reach them?

## The Acts 1:8 model:

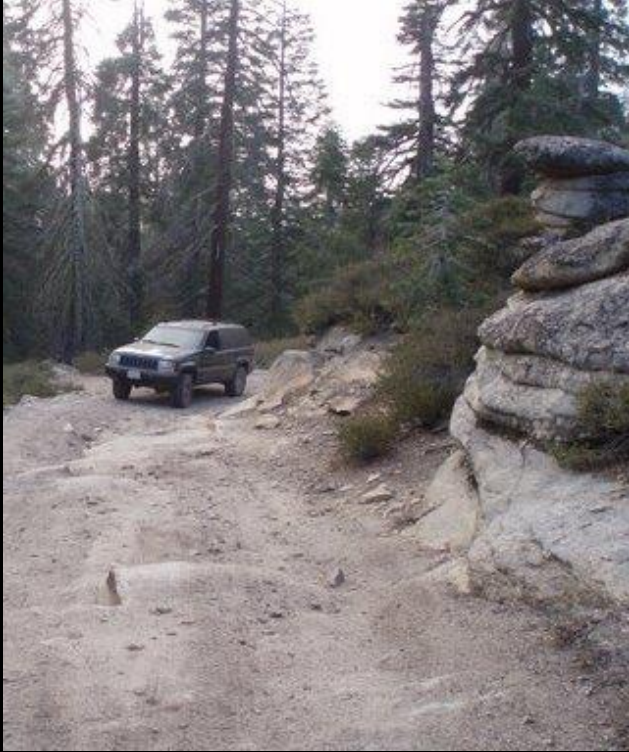
Jerusalem E0 – Reach Our Family and Nominal Christians

Judea E1 – Our culture & Language

Samaria E2 – Similar language or culture

All peoples E3 – Distance, Distinct Culture difference and significant language barriers.

# E0 Reach Our Jerusalem



## Climbing Illustration: Driving

- Driving there is part of the trip.
- It can get bumpy!
- Reaching nominal Christians and our own families is part of the Great Commission. It's a big deal!

# E0 Reach Our Jerusalem



## Personal Faith Story

A mom leading her child to faith in Christ.



## Corporate Faith Story

Rooted reinforces and reaches our kids/grandkids. Alexander Hilbelink accepted Christ in class.



# E0 Reach Our Jerusalem

Application: God desires to use YOU to reach your family and nominal Christians at work, at school, or wherever you play.

God desires to use US to build this church.

# E1 Reach Our Judea



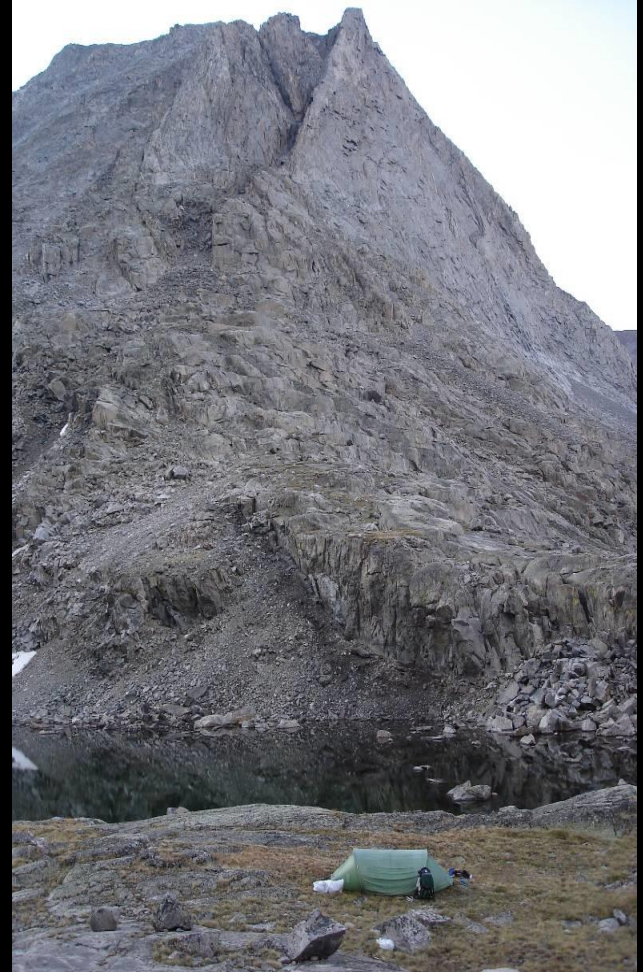
We've  
reached the  
'base camp.'

We reach our culture and  
language. An E1 witness is most  
effective.



# E1 Reach Our Judea

“You are worthy to take the scroll and to open its seals, because you were slain, and with your blood you purchased for God persons from every tribe and language and people and nation.” Revelation 5:9





# E1 Reach Our Judea



## Personal Faith Story

Ed and Mindy Zinthefer, Arch Electric, praying with employees and potential customers before meetings.



## Corporate Faith Story

Parkview Partnership and a recent personal request for help.



# E1 Reach Our Judea

## 2019 Year to date

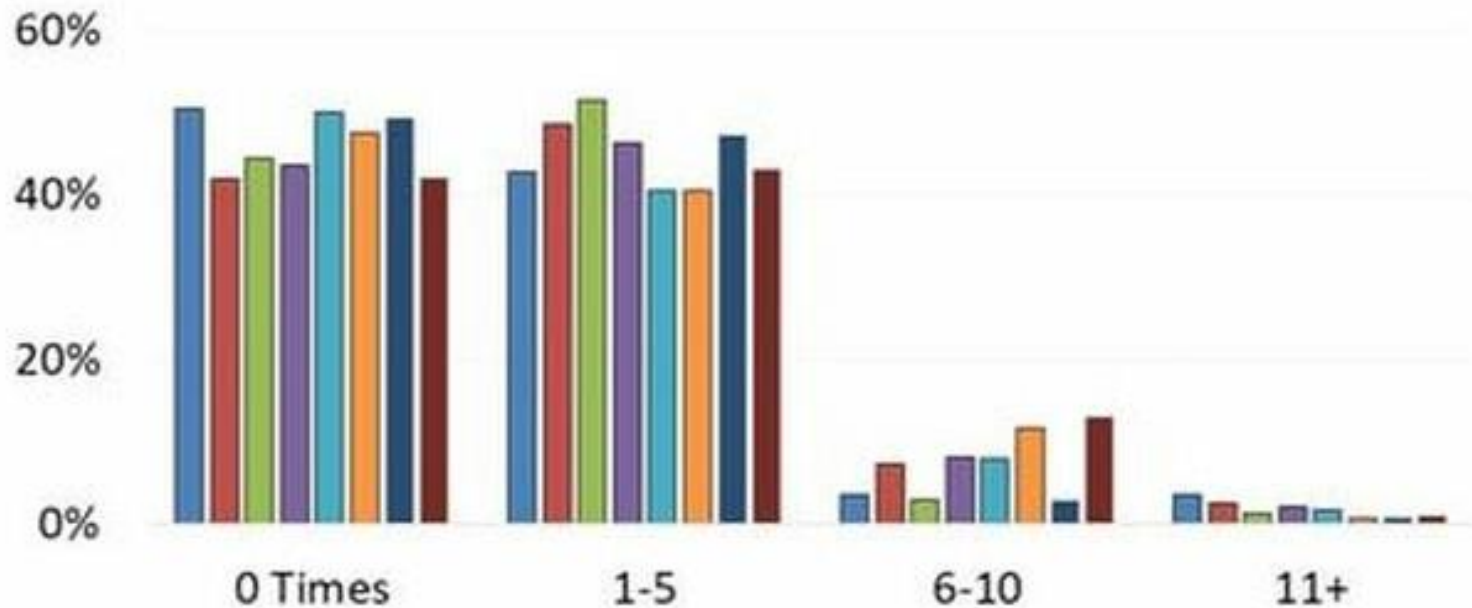
Givers vs Non-Givers

By Families ▼



# E1 Reach Our Judea

Monthly Serving Through an Ongoing Ministry here at PAC



# E1 Reach Our Judea

Application: God still desires and deserves more glory even in 'reached' places, like Plymouth, WI.

How are you doing at building THIS church?

# E2 Reach Our Samaria



The point is E1.

But E0 Through E-3

The terrain gets steeper.

The question becomes when  
do we rope up?

# E2 Reach Our Samaria



## Personal Faith Story

People who are language tutors for immigrants.

## Corporate Faith Story

Church plant help – Belgium Community Church. A future church plant in Cascade or Elkhart Lake.



# E2 Reach Our Samaria

Application: Belgium, Cascade or Elkhart Lake are opportunities to impact people.

Lets pray we can broaden our Reach.  
We have room to grow.

# E3 Reach All peoples



E3 All peoples = the summit

- No doubt – people want to be roped up for this section.
- This assumes strategic partnerships.
- If there is no viable church there can't be an effective witness.

# E3 Reach the Ends of the earth

## Personal Faith Story

Jonathan and Shannon Ribich taking a year to serve in El Salvador with Envision.



## Corporate Faith Story

Support of our 9 E3's.

### **Global Partnerships**



# E3 Reach All Peoples

		#People groups	% Ev Christian
Bakers –	Laos	128	2.5%
Clasons –	Guinea	48	0.7%
S. & W. –	Russia	180	1.5%
Roos –	France	113	1.2%
Schaeffers –	Japan	36	0.6%
Williams –	Senegal	56	0.2%

## Support and Training

Schuhs – 3969 languages with no Scripture

Stemples

Vahakangas

# Challenges of the Unfinished Task

## \* People Group Challenge \*

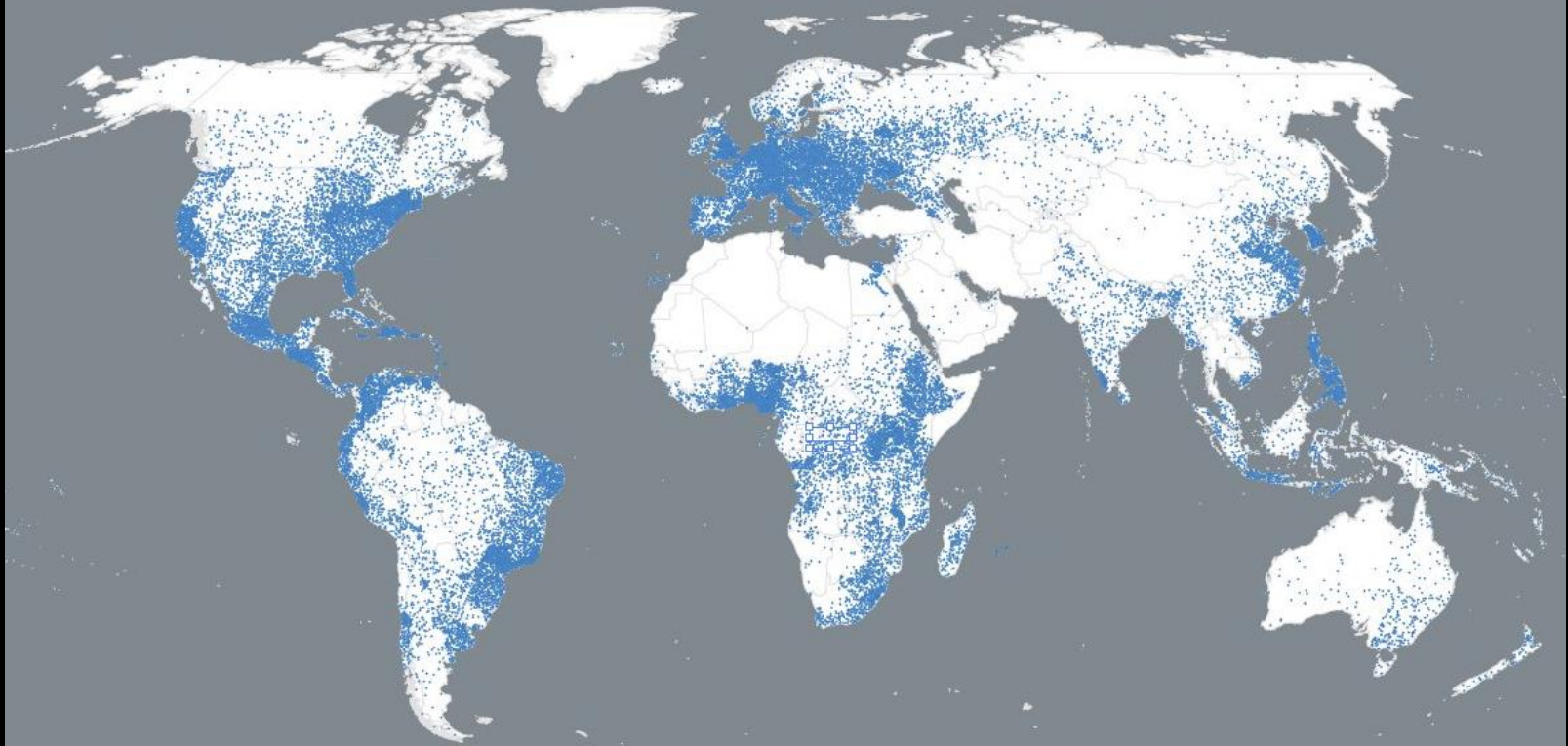
Remaining people groups are the most difficult to penetrate.

- **GEOGRAPHIC BARRIERS:** remote, harsh climate, difficult access, or nomadic.
- **LINGUISTIC BARRIERS:** illiteracy, no scripture in their language, unwritten language, terminology confusion.
- **CULTURAL BARRIERS:** persecution, closed to change, Christianity viewed as a “foreign” religion.

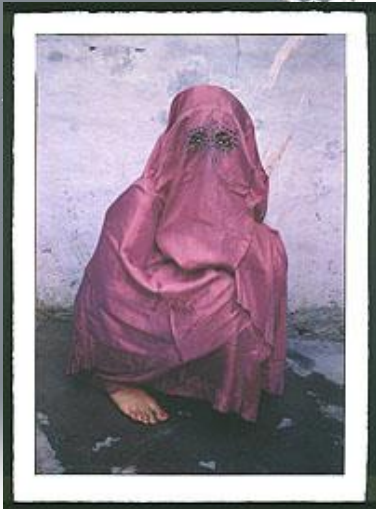
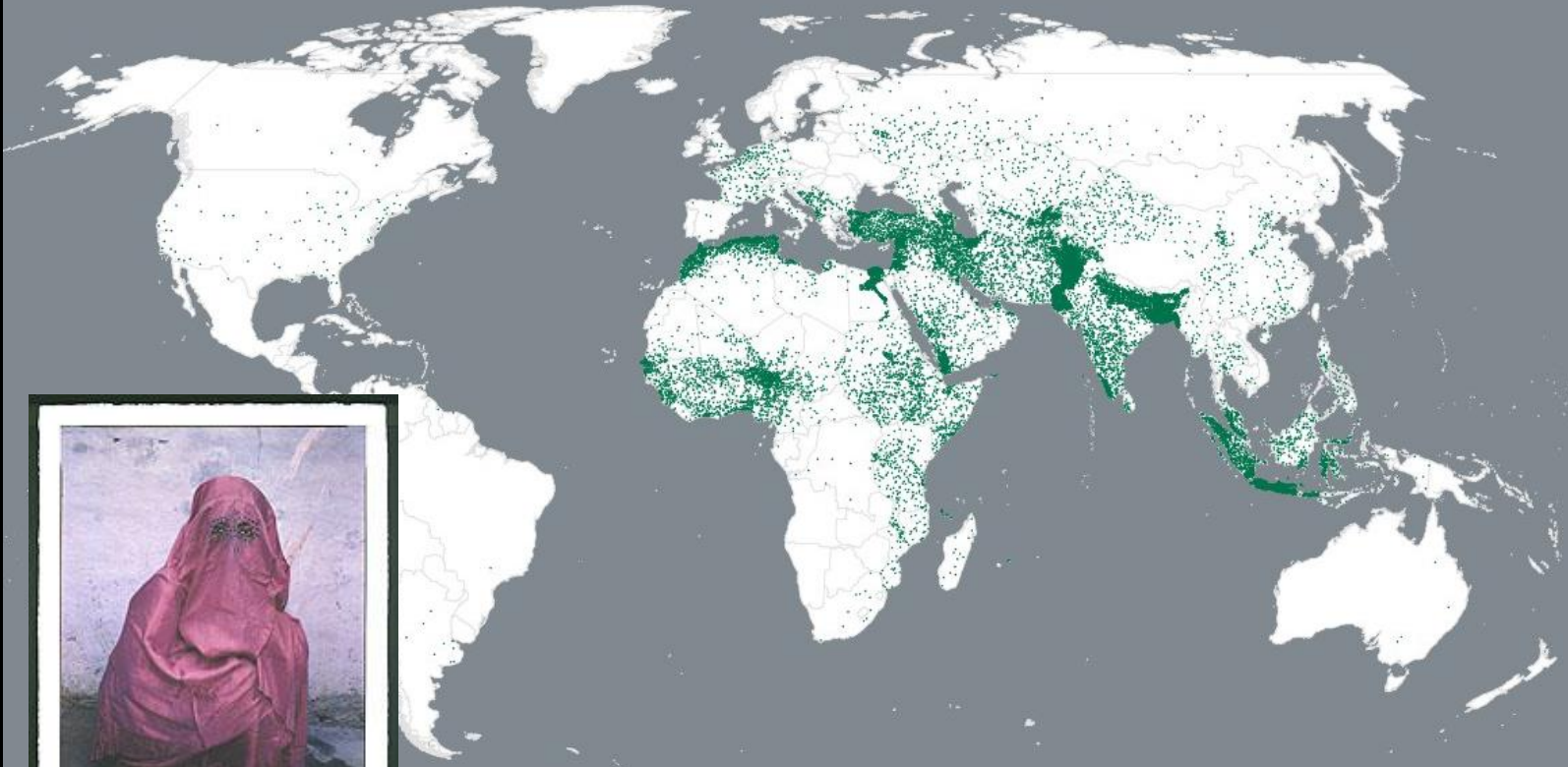




# The World's Christians

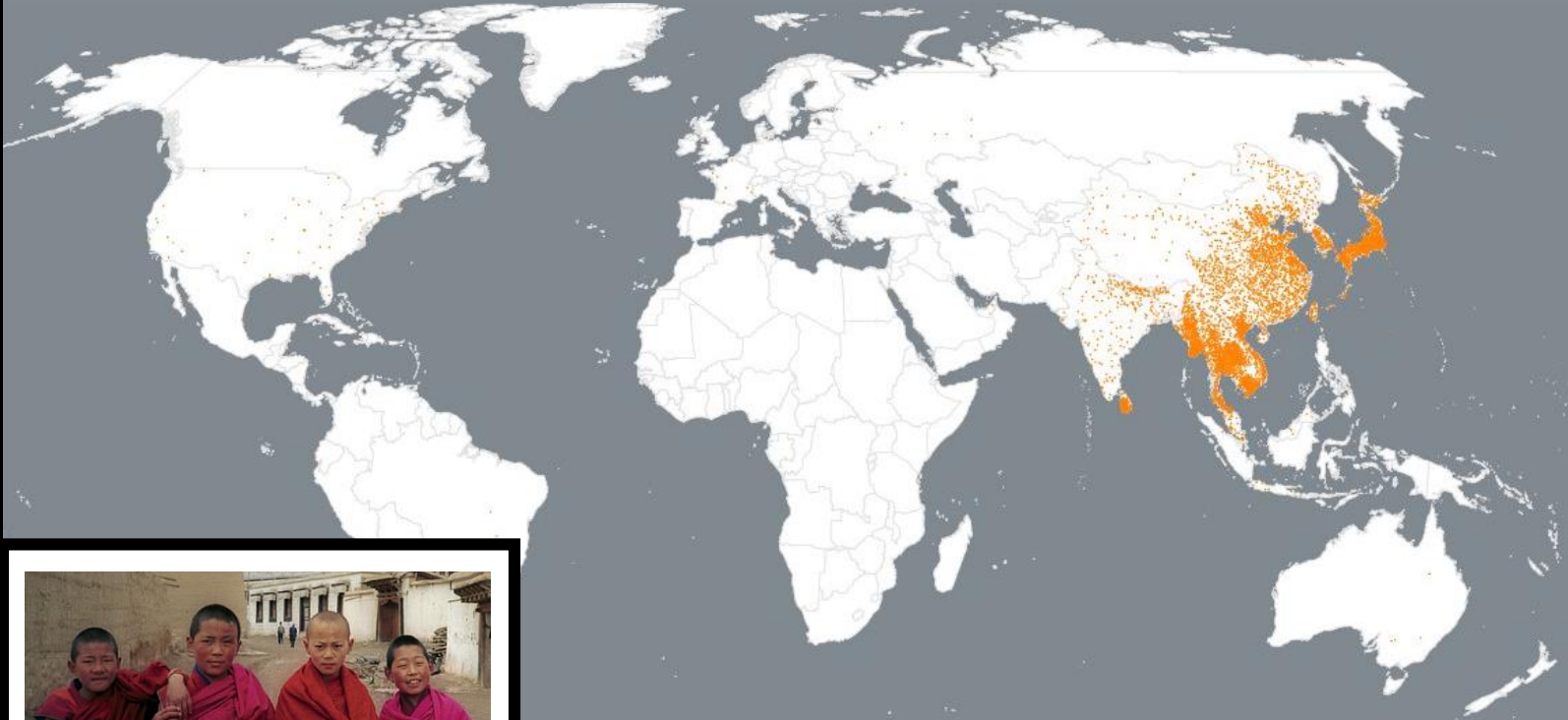


# The World's Muslims



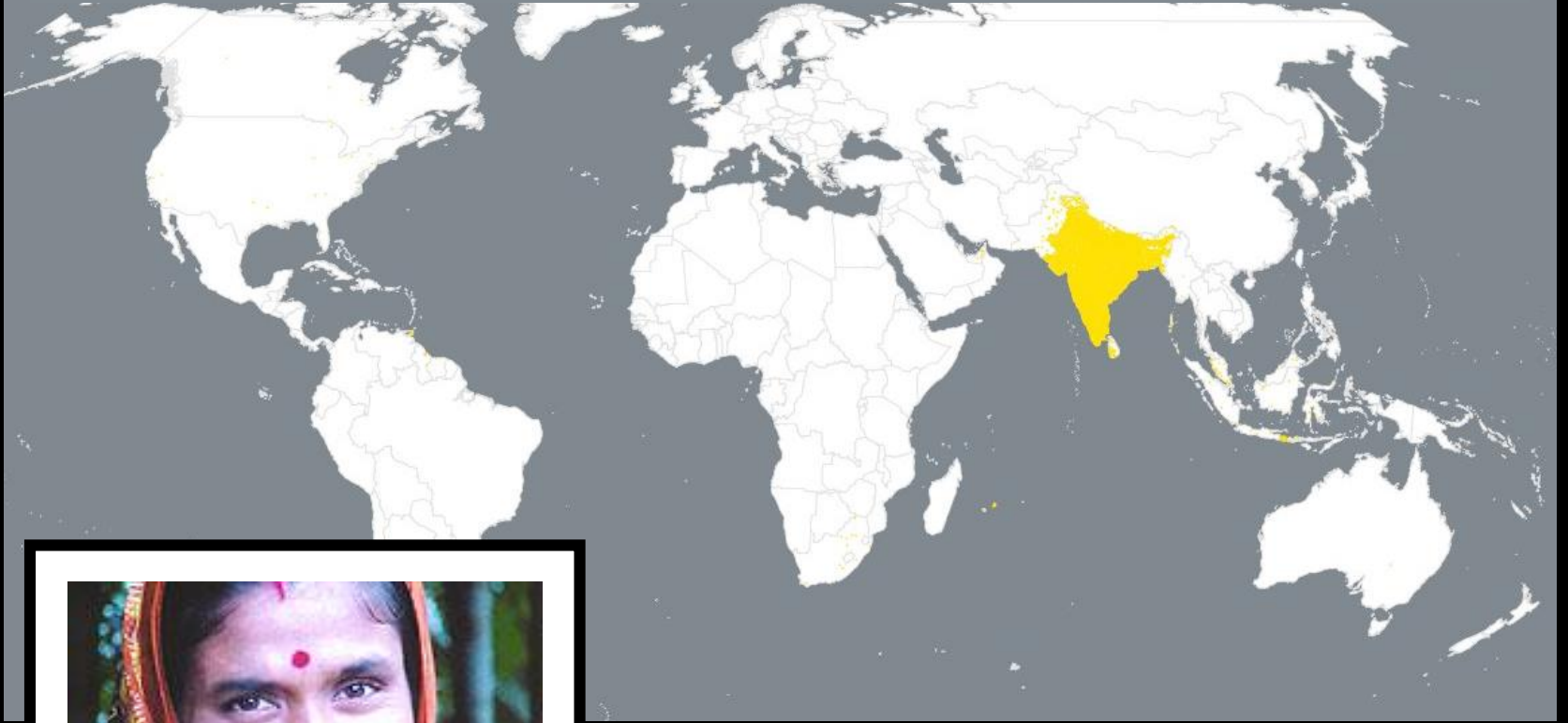
900 Million

# The World's Buddhists



230 Million

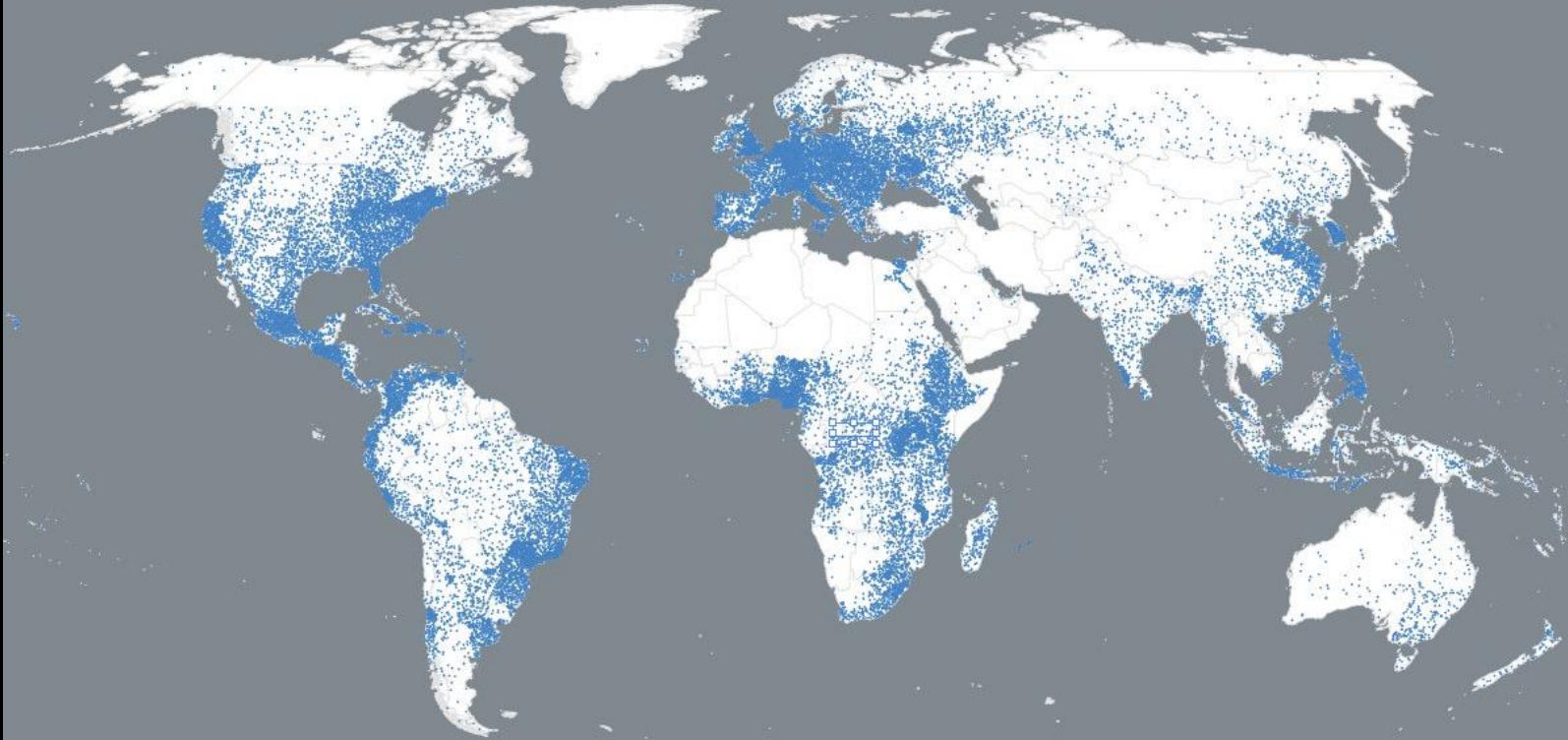
# The World's Hindus



640 Million



# Christians and the Unevangelized





# **Senders**

**For a Cross-Cultural Worker to  
go out it takes 6-20 senders**

**Pray  
Encourage  
Support**



# E3 Reach All Peoples

Application: Are you on the rope?

# Giving to Global Partners



# E3 Reach All Peoples

Application: Are you on the rope?

3 John 6-7 “They have told the church about your love. Please send them on their way in a manner that honors God. It was for the sake of the Name that they went out.”

# Summiting: Getting The Job Done



Jerusalem – E0 Reach our family.

Judea – E1 Reach our community.

Samaria – E2 Reach nearby towns.

All peoples – E3 Reach All Peoples

The summit will be reached, the  
Commission will be completed.

*Don't miss out on the mission and  
purpose of your very existence.*



# Our Local and Global Reach



**“But you will receive power  
when the Holy Spirit comes  
on you.” Acts 1:8**